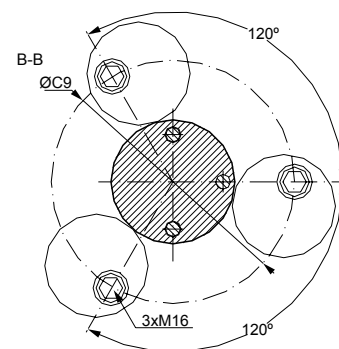
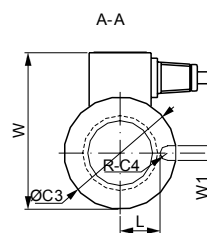
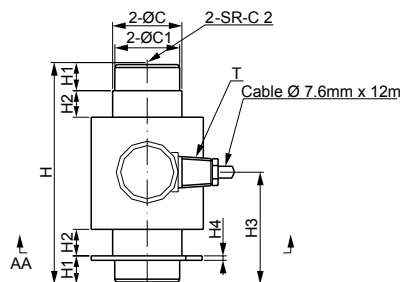


# Atrax Weighbridge Canister Load Cells

With international accreditations, robust Atrax canister load cells are extensively used in our 80t rated weighbridge installations.



CAPACITY	DIMENSIONS (mm)																				
	Tonnes	C	C1	C2	C3	C4	C5	C6	C7	C8	C9	H	H1	H2	H3	H4	H5	H6	L	W	W1
30 - 40	47	44	160	75	5	84	64	11	9.5	165	150	19	18	80	3	200	35	27	106	10	1/2-14 NPT

SPECIFICATIONS			
Full Scale Output	2.0 mV/V $\pm$ 0.25%	Recommended Excitation	10 V (15V Maximum)
Zero Balance	$\pm$ 0.02 mV/V	Insulation Resistance	> 2 G $\Omega$ [50 Vdc]
Non-linearity	< $\pm$ 0.023%	Compensated Temperature Range	-10° to 50°C
Non-repeatability	< $\pm$ 0.023%	Safe overload	150% of full scale
Hysteresis Error	< $\pm$ 0.023%	Breaking overload	300% of full scale
Input Resistance	700 $\Omega$ $\pm$ 20		
Output Resistance	705 $\Omega$ $\pm$ 5		

CABLE COLOUR CODE	
Exc + Red	Exc - Black
Sig + Green	Sig - White
Shield Bare	

## FEATURES

- 2Cr13 stainless steel
- Robust, long life construction
- Environmentally sealed to IP68
- Load cell mounting kits are included with weighbridge installations

## ACCREDITATIONS

- OIML MAA C3
- CE Certificate of Conformity
- NTEP 1:10000 Class III, M
- RoHS
- ISO9001 manufacturing facilities

Rev 09/20

## Atrax Group NZ Ltd

Telephone +64 9 634 5337  
 Email info@atraxgroup.com  
[www.atraxgroup.com](http://www.atraxgroup.com)

