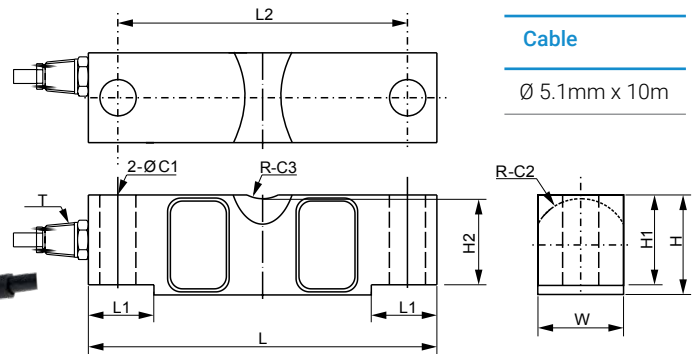


Atrax Double Ended Shear Beam Load Cell & Mount



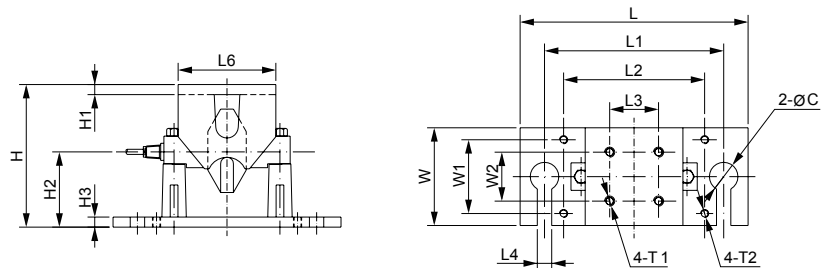
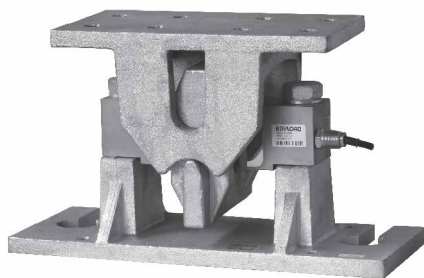
CAPACITY	DIMENSIONS (mm)										
	C1	C2	C3	H	H1	H2	L	L1	L2	W	Thread
25 klb or 11t	17.3	22.9	19.1	49.3	43.2	41.5	196.9	35.1	165.1	42.9	1/4-18 NPT

SPECIFICATIONS			
Full Scale Output	3.0mV/V ± 0.25%	Recommended Excitation	10 V (15V Maximum)
Non repeatability	≤ 0.017%	Insulation resistance	> 2 GΩ [50 Vdc]
Zero Balance	± 0.02 mV/V	Compensated temperature range	-10° to 50°C
Input resistance	700 Ω ± 10	Safe overload	150% of full scale
Output resistance	700 Ω ± 5	Ultimate overload	300% of full scale

CABLE COLOUR CODE	
Exc + Red	Exc - Black
Sig + Green	Sig - White
Shield Bare	

- FEATURES**
- Alloy steel, Nickel plated
 - Robust, long life construction
 - Environmentally sealed to IP67

- ACCREDITATIONS**
- CE Certificate of Conformity
 - NTEP 1:10000 Class IIII, M
 - RoHS
 - ISO9001 manufacturing facilities



LOAD CELL CAPACITY	DIMENSIONS (mm)															
	C	H	H1	H2	H3	L	L1	L2	L3	L4	L6	W	W1	W2	Thread 1	Thread 2
25 klb or 11t	44.5	219	15.7	113.1	15.0	355.6	279.4	220.0	76.2	22.5	152.4	152.4	115.0	76.2	5/8-11 UNC-2B	1/2-13 UNC

- FEATURES**
- Takes 25klb or 11t Load Cell
 - Centre pivoted with self-aligning suspension link design
 - Allows for multi-directional movements
 - No check rods required

Rev 09/20